



FEATURES

- The different electrical connections (DIN or metal M12) and low power consumption of the standard pilots allow the valves to be used in a variety of applications.
- Application models 2x3/2 in piloting of valves

GENERAL

Fluid

Operating pressure

Ambient temperature

Flow (Qv at 6 bar)

- conforming to ISO 6358

Air or neutral gaz, filtered, lubricated or not
1 to 10 bar (with internal supply to pilot)
-0,950 bar to +10 bar (with external supply to pilot)
-10 °C to +60 °C
1150 l/min (ANR)
C = 4,40 x 10⁻⁸ m³/s.Pa (sonic conductance)
b = 0,28 (absolute static pressure)
Single or joinable subbases

Subbase

CONSTRUCTION

SPOOL VALVES

Body

Top cover, end covers

Internal parts

Seals

PILOTS (see page P502B)

Solenoid valves 3/2 NC, **series 302**, pad mounting CNOMO E06.36.120N (size15)

Injected aluminium
PAA (polyarylamide)
POM (polyacetal) and aluminium
NBR (nitrile)

ELECTRICAL CHARACTERISTICS

voltages		consumption		insulation class	protection degree	electrical connection
~	=	~	=			
24V, 115V	12V, 24V	1,2 VA	1,1 W	F	IP 65	spade plug size 15 connector, DIN 43650, 9,4 mm, industry standard B, rotatable by 90°
230V	24V	1,6 VA	1,5 W			
-	24V	-	1,15 W	F	IP 67	M12 connection + LED and protection

SPECIFICATIONS

function symbol			operators solenoid air operated pilot (14) return (12)	pilot pressure (bar)		2 catalogue numbers		with connector size 15 or M12 connection	(W)	(M)
				min.	max.	spool valve	solenoid valve quantity and cat. n°			
						internal supply	external supply			
2x 3/2	NC-NC		spring return	2,5	10	53992126	53992135	+ 2x		
	NO-NO		spring return	2,5	10	53992123	53992132			
	NC-NO		spring return	2,5	10	53992125	53992134			
5/2			spring return	2,5	10	53992121	53992149	+ 1x	30211109 (T15)	1,1 ▼
			differential return	2,5	10	53992026	53992148		30211110 (T15)	1,1 ●
			solenoid differential return	2,5	10	53992122	53992150	+ 2x	30211121 (T15)	1,5 ▼
			solenoid air return	1	10	53992027	53992127		30211122 (T15)	1,5 ●
5/3			pressure held W1	2,5	10	53992028	53992129	+ 2x	to see our complete range of pilot 302 (P502B)	
			pressure applied W2	2,5	10	53992029	53992130			
			pressure release W3	2,5	10	53992030	53992131			

(M) Type of manual operator on pilot(s) ● : maintained ▼ : impulse

When ordering, please specify in addition to the basic solenoid valve catalogue number:

- the type of current: voltage / frequency of the solenoid valve
- to be inserted after the basic solenoid valve catalogue number: --A (~) or --D (=)

Examples : **53992121 + 1 x 30211109--D 24V DC**

53992126 + 2 x 30211110--A 230V AC

OPTIONS see page 6

FEATURES

- The different electrical connections (DIN or metal M12) and low power consumption of the standard pilots allow the valves to be used in a variety of applications.
- Application models 2x3/2 in piloting of valves

GENERAL

Fluid

Air or neutral gas, filtered, lubricated or not

Operating pressure

1 to 10 bar (with internal supply to pilot)

-0,950 bar to +10 bar (with external supply to pilot)

Ambient temperature

-10°C to +60°C

Flow (Qv at 6 bar)

1150 l/min (ANR)

- conforming to ISO 6358

C = 4,40 x 10⁻⁸ m³/s.Pa (sonic conductance)

b = 0,28 (absolute static pressure)

Subbase

Single or joinable subbases

CONSTRUCTION

SPOOL VALVES

Body

Injected aluminium

Top cover, end covers

PAA (polyarylamide)

Internal parts

POM (polyacetal) and aluminium

Seals

NBR (nitrile)

PILOTS (see leaflet P502B)

Solenoid valves 3/2 NC, **series 302**, pad mounting CNOMO E06.36.120N (15x15)



ports			
1	= Pressure supply	2-4	= Outlets
3-5	= Exhausts		
82/84	= Pilot exhaust		

ELECTRICAL CHARACTERISTICS

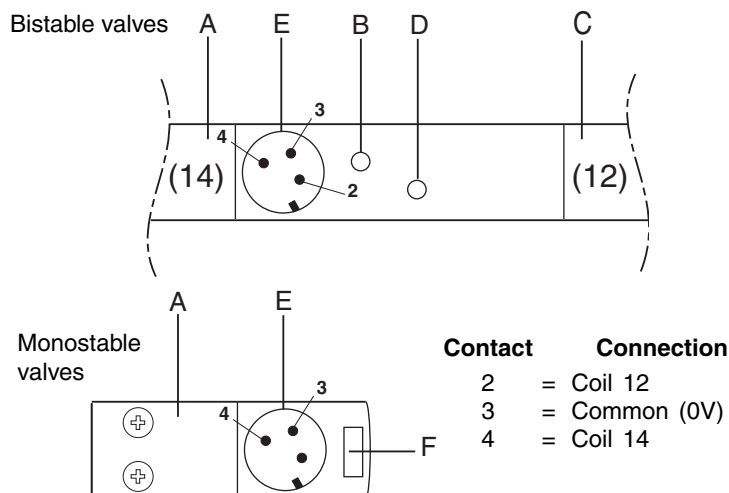
SV type	voltage	consumption	insulation class	protection degree	electrical connection
series 302	24V =	1,15 W	F	IP 67	centralised M12 connection CNOMO E03.62.520N on socket with 3 male pins

SPECIFICATIONS

		function symbol	operators solenoid air operated pilot (14) return (12)	pilot pressure (bar)		catalogue number spool valve with series 302 pilot(s)		
				min.	max.	internal supply	external supply	(M)
2x 3/2	NC-NC		spring return	2,5	10	53902155	53902154	▼
			differential return	2,5	10	53902072	53902069	▼
5/2			spring return	2,5	10	53902072	53902069	▼
			differential return	2,5	10	53902066	53902063	▼
			solenoid differential return	2,5	10	53902084	53902081	▼
			solenoid air operated return	1	10	53902090	53902087	▼
5/3			pressure held W1	2,5	10	53902096	53902093	▼
			pressure applied W2	2,5	10	53902102	53902099	▼
			pressure release W3	2,5	10	53902108	53902105	▼

(M) Type of manual operator on pilot(s) : ▼ : impulse

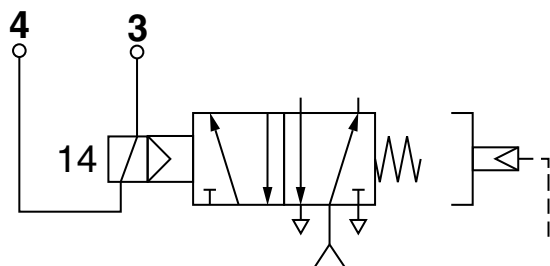
DISPLAY AND CONNECTION OF M12 CONNECTOR



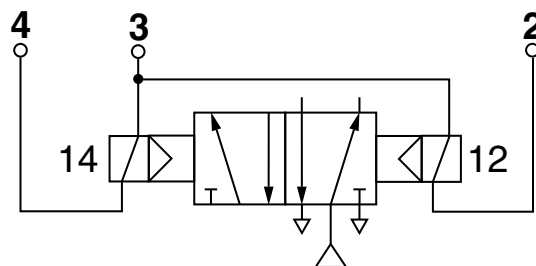
- A: Operator pilot valve (14)
- B: Yellow LED indicating energisation of pilot valve 14 (operator)
- C: Return pilot valve (12), bistable or 5/3
- D: Yellow LED indicating energisation of pilot valve 12 (return)
- E: Bulkhead connector, 3 male contacts, CNOMO E03.62.520N, for electrical connection of two pilot valves.
- F: Yellow LED indicating energisation of pilot valve.

NOTE: The built-in electrical protection is provided by bi-directional Transil diodes.
Assignment is as per ISO/CD20401 standard.

■ Monostable spool valves



■ Bistable and 5/3 spool valves



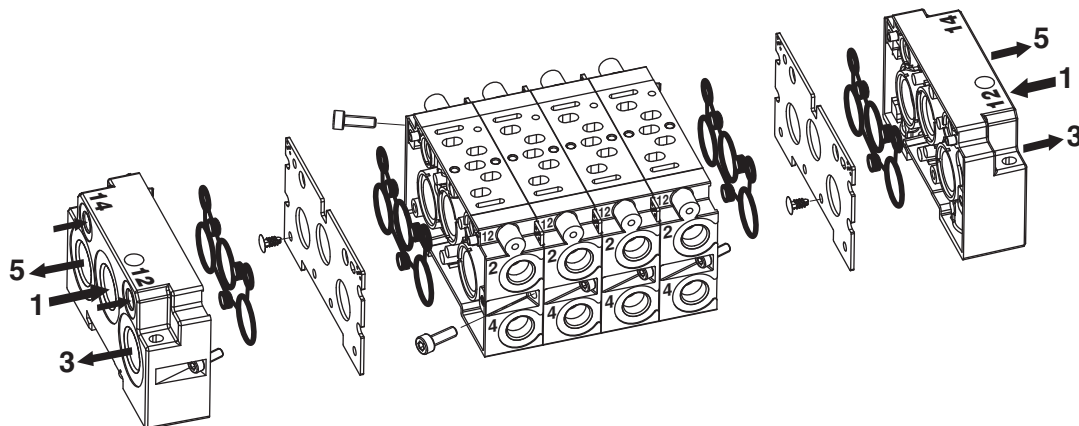
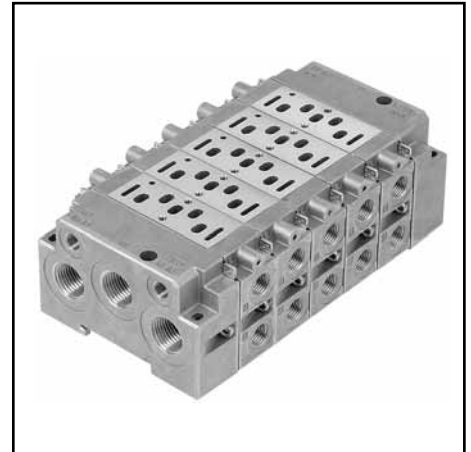
GENERAL

This subbase system offers the following main characteristics:

- The equipment has a **standard** interface complying with the international standard ISO 15407-1, size 01 (26 mm), so that spool valves series 539 can be fitted.
- Subbases with **side ports or bottom ports**.
- Choice of connections: ports 2 and 4 tapped or with couplers.
- The subbases are fitted with selector plates, allowing for a choice of piping arrangements and inter-connections.

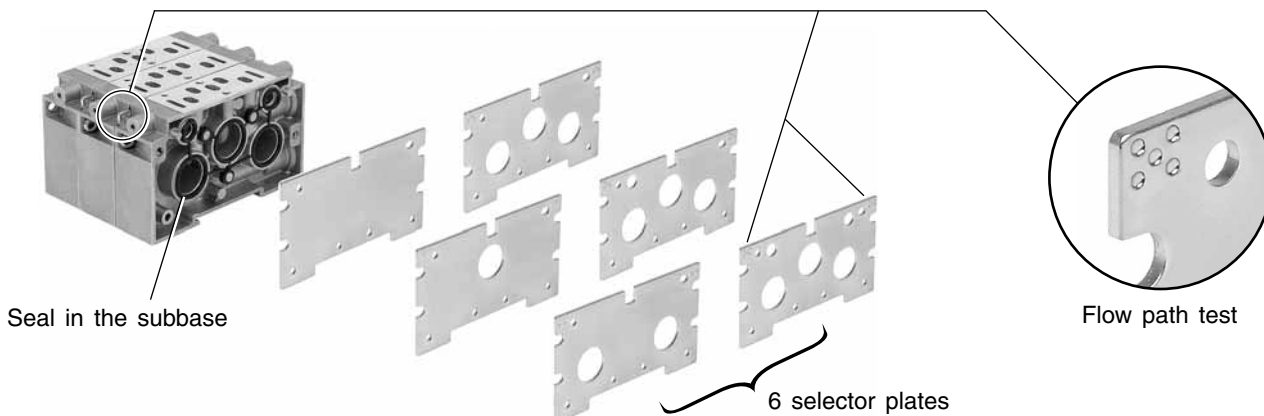
CHARACTERISTICS AND ADVANTAGES

- Easy connection due to a large number of piping options on the subbase:
 - Side ports (2 and 4: tapped or with couplers).
 - Bottom ports (2 and 4: tapped or with couplers).
 - Ports 12 and 14 for external pilot pressure supply (tapped M5).
- Captive selector plates:
 - Each plate is provided with perforations allowing for error-free identification of the ports in use.
 - The standard selector plate (connection of ports 1-3-5-12-14) is pre-mounted on the subbase to allow for quick installation.
- Suitable for direct installation on machine frame:
 - Quick mounting on DIN rail with eccentric quarter-turn tappets.
- Easy assembly/disassembly: easy maintenance.
 - The inclined position of the mounting screws provides for easy assembly or disassembly of individual subbases without having to disassemble the whole system.

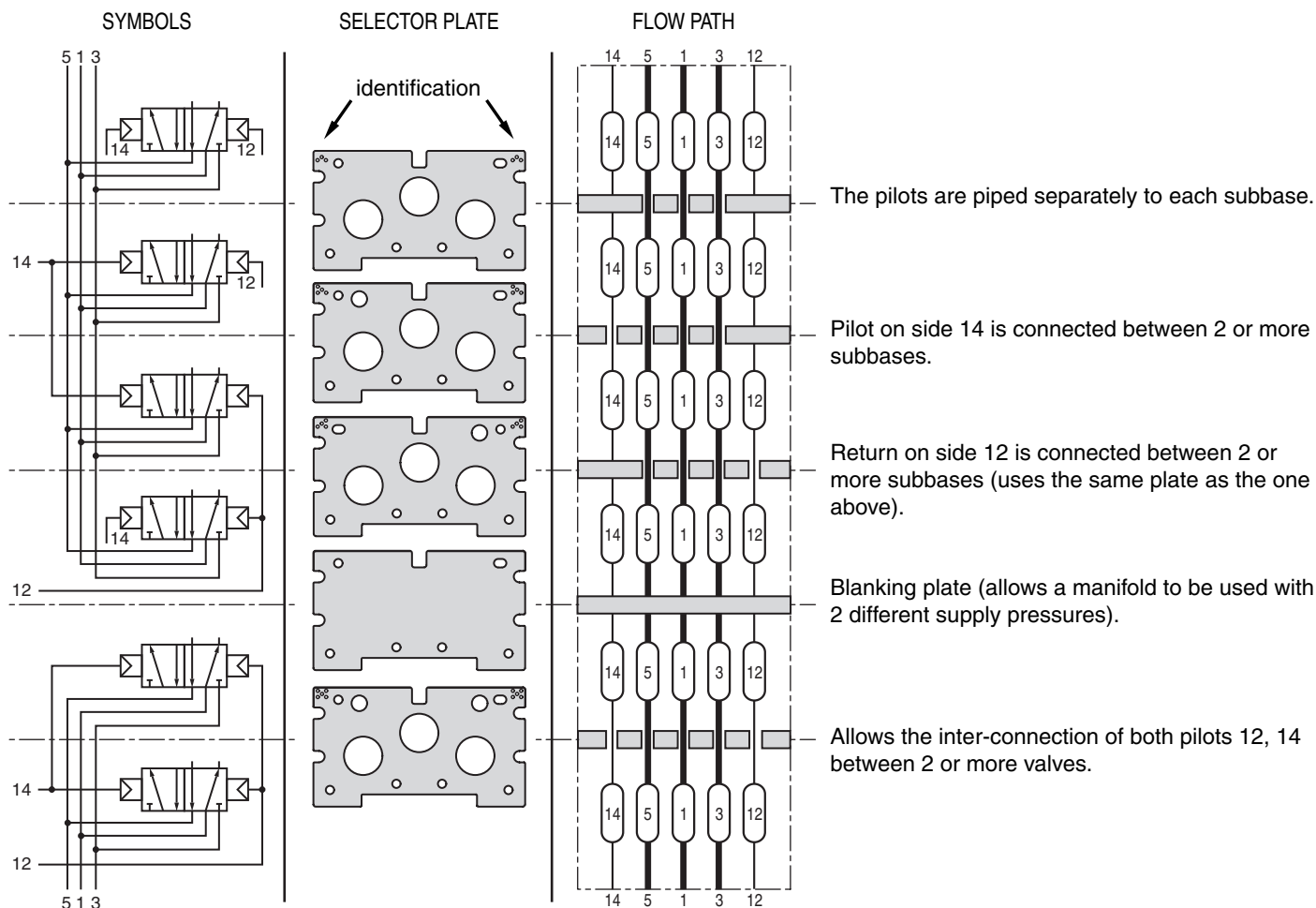


POSSIBLE FLOW PATHS

The subbases include 5 flow paths (1-3-5-12-14), all of which can be connected through the end plates of each manifold assembly.



POSSIBLE FLOW PATHS



PIPING OF SUPPLY AND EXHAUSTS TO THE END COVERS

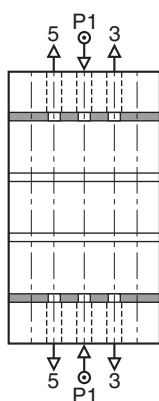
Pressure supply and exhaust on the end fittings.

Supply and exhausts to 1 side plate.

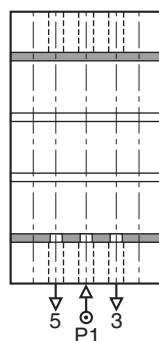
Assembly with 2 different pressures and with the exhaust piped to both end plates.

Assembly with 1 supply on 1 plate but with exhausts from the 2nd end plate.

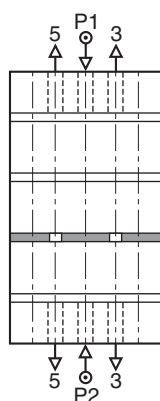
Assembly with the supply port in 1 end plate and the exhaust from the other end plate.



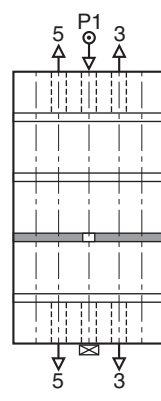
Selector plates supplied as standard allows the assembly as shown above.



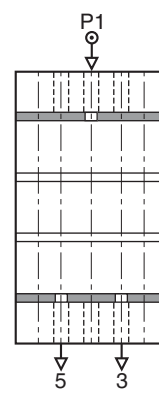
This assembly requires a blank selector plate (no flow).



For this assembly a selector plate with connections between 3, 5 is necessary.



For this assembly a selector plate allows flow through port 1 if required. The supply port in the second plate must be plugged.



For this assembly you require 2 selector plates, 1 allowing flow through port 1 and 1 allowing flow through ports 3, 5. This arrangement allows the assembly without plugging any ports.

SUBBASES

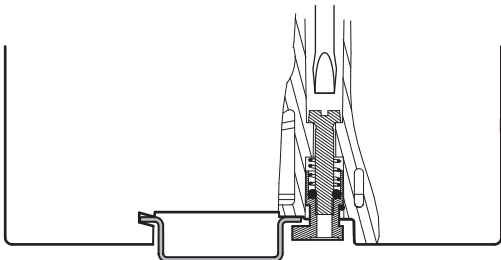
subbase	size	connection	description	port connection			catalogue number
				1-3-5	2-4	12-14	
single subbase	ISO 01		subbase	G 1/4	G 1/4	M5	35500526
joinable subbases	ISO 01	side	1 subbase + 2 seals	-	G 1/4	(1)	35500576
			1 selector plate (connects ports 1-3-5-12-14)	-	instant fittings tube 10mm O.D	-	35500578
		bottom	1 subbase + 2 seals	-	G 1/4	-	35500573
			1 selector plate (connects ports 1-3-5-12-14)	-	instant fittings tube 10mm O.D	-	35500575
			2 end plates + 2 seals	G 1/2	-	G 1/8	88135559
			1 selector plate (connects ports 1-3-5-12-14)				
			blank selector plate (no flow)				88135558
			selector plate (connects port 1)				88135557
			selector plate (connects ports 3 and 5)				88135556
			selector plate (connects ports 1 - 3 - 5)				88135555
			selector plate (connects ports 1 - 3 - 5 and 1 pilot 12 or 14)				88135554
			selector plate (connects ports 1 - 3 - 5 and 2 pilots 12 and 14)				88135553

(1) Joinable subbase with side ports G 1/4 and ports 12-14 tapped M5, catalogue number **35500588**



Spool valves with subbase mounted pilots on joinable subbases

Joinable subbases ISO 01 can be mounted on symmetrical EN 50022 profile with two 1/4-turn eccentric nuts.



SPOOL VALVE OPTIONS

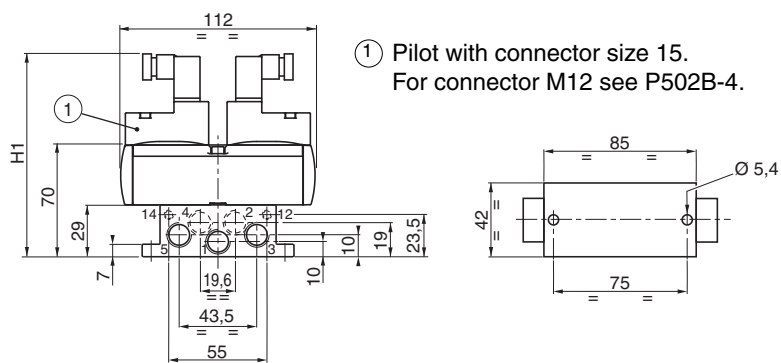
- Material and solenoid pilot valve for use in potentially **explosive atmospheres** caused by gases or dusts - ATEX directive 94/9/EC (consult our ATEX - X019 catalogue)
- Version with collectable exhausts, consult us

M12 CONNECTORS

- Straight M12 connector with 5 female contacts, Ø4 to 6mm cable entry, catalogue number: **88100304**
- Straight M12 connector with 5 female contacts, Ø6 to 8mm cable entry, catalogue number: **88100256**
- Straight M12 connector with 5 female contacts, cable length 5m, catalogue number: **88130212**
- Right-angle M12 connector with 5 female contacts, cable length 5m, catalogue number: **88130213**

weight	
spool valve + subbase	
with 1 pilot	with 2 pilots
0,465	0,510

n° ports	Ø ports	pilot	dimension H1
1-3-5	G 1/4	size 15	120
2-4	G 1/4	M12	109
12-14	M5	integrated M12	109



number of subbases	dimension		weight spool valve + 2 pilots + subbases + end plates
	A	B	
3	128,8	140	1,601
4	155,8	167	1,966
5	182,8	194	2,331
6	209,8	221	2,696
7	236,8	248	3,061
8	263,8	275	3,426
+1	+27	+27	0,365

n° ports	Ø ports	pilot	dimension H2
1-3-5	G 1/2	size 15	151
2-4	G 1/4	M12	140
12-14 (*)	G 1/8	integrated M12	140

(*) subbases : tapping M5 of ports 12 and 14 on request

- ① Pilot with connector size 15.
Connector M12: see P502B-4.
- ② Tapped bottom port
- ③ Bottom port with instant fittings
for flexible tube 10mm O.D
- ④ Tapped side port
- ⑤ Side port with instant fittings
for flexible tube 10mm O.D

